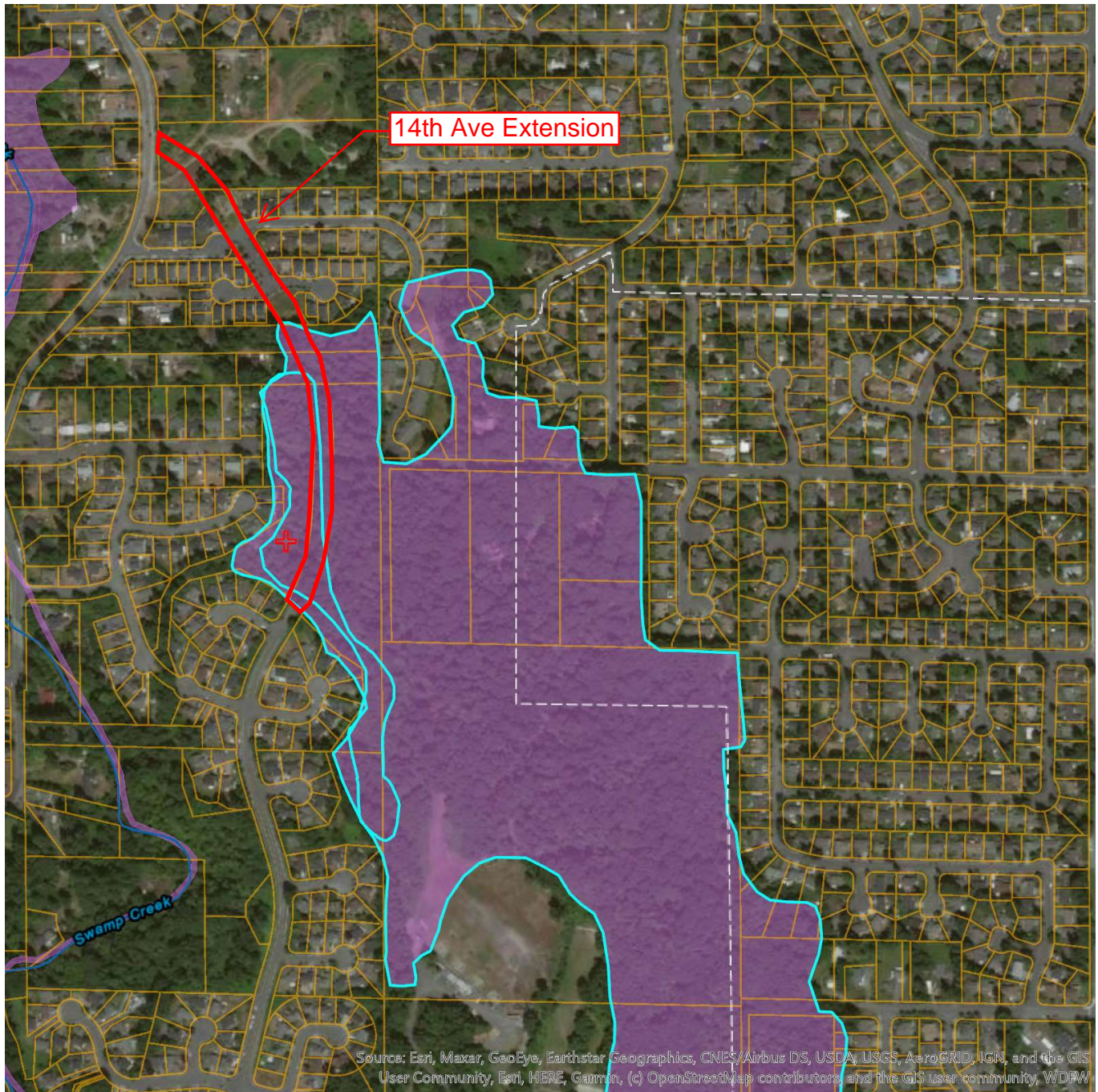




# Priority Habitats and Species on the Web



Report Date: 03/16/2021

## PHS Species/Habitats Overview:

Occurrence Name	Federal Status	State Status	Generalized Location
Biodiversity Areas And Corridor	N/A	N/A	No
Freshwater Forested/Shrub Wetland	N/A	N/A	No

## PHS Species/Habitats Details:

Biodiversity Areas And Corridor	
Priority Area	Terrestrial Habitat
Site Name	SW SNOH. CO. OPEN SPACE. I-5 TO SNOQUALMIE RIVER
Accuracy	1/4 mile (Quarter Section)
Notes	VARIOUS OPEN SPACE AREAS PROVIDING A VARIETY OF HABITATS, MOSTLY FORESTED. FROM EVERETT SOUTH TO KING CO. AND I-5 TO SNOQ. R. INCLUDES WETLANDS AND RIPARIAN AREAS TOO SMALL TO MAP INDIVIDUALLY.
Source Record	902695
Source Dataset	PHSREGION
Source Name	OPPERMAN, TONY
Source Entity	WA Dept. of Fish and Wildlife
Federal Status	N/A
State Status	N/A
PHS Listing Status	PHS Listed Occurrence
Sensitive	N
SGCN	N
Display Resolution	AS MAPPED
ManagementRecommendations	<a href="http://wdfw.wa.gov/publications/pub.php?id=00023">http://wdfw.wa.gov/publications/pub.php?id=00023</a>
Geometry Type	Polygons

Freshwater Forested/Shrub Wetland	
Priority Area	Aquatic Habitat
Site Name	N/A
Accuracy	NA
Notes	Wetland System: Freshwater Forested/Shrub Wetland - NWI Code: PFOC
Source Dataset	NWIIWetlands
Source Name	Not Given
Source Entity	US Fish and Wildlife Service
Federal Status	N/A
State Status	N/A
PHS Listing Status	PHS Listed Occurrence
Sensitive	N
SGCN	N
Display Resolution	AS MAPPED
ManagementRecommendations	<a href="http://www.ecy.wa.gov/programs/sea/wetlands/bas/index.html">http://www.ecy.wa.gov/programs/sea/wetlands/bas/index.html</a>
Geometry Type	Polygons

DISCLAIMER. This report includes information that the Washington Department of Fish and Wildlife (WDFW) maintains in a central computer database. It is not an attempt to provide you with an official agency response as to the impacts of your project on fish and wildlife. This information only documents the location of fish and wildlife resources to the best of our knowledge. It is not a complete inventory and it is important to note that fish and wildlife resources may occur in areas not currently known to WDFW biologists, or in areas for which comprehensive surveys have not been conducted. Site specific surveys are frequently necessary to rule out the presence of priority resources. Locations of fish and wildlife resources are subject to variation caused by disturbance, changes in season and weather, and other factors. WDFW does not recommend using reports more than six months old.